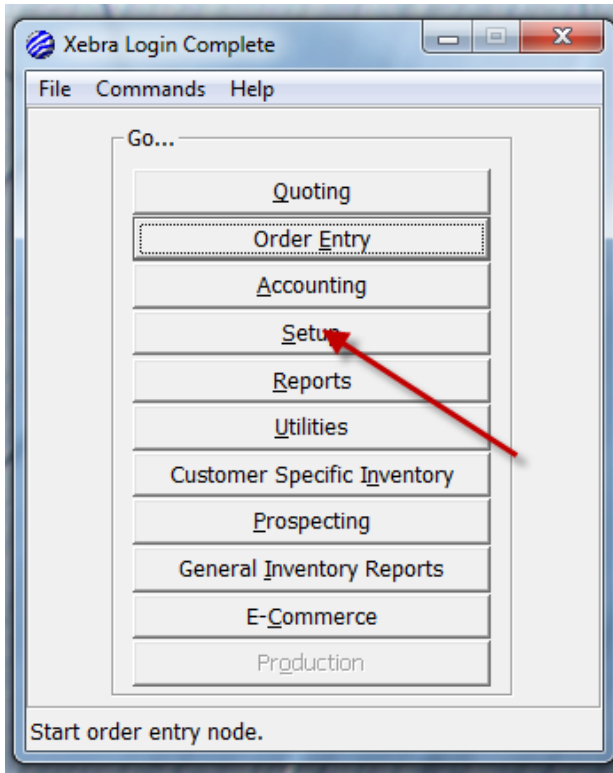
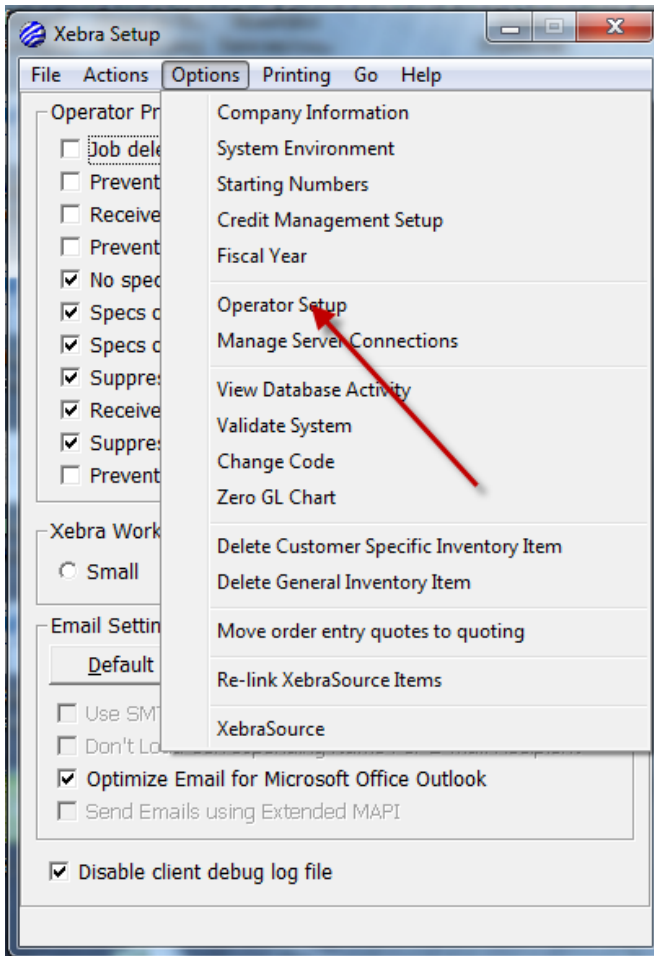


Adding a new operator in Xebra



Chooses Operator Set-up



Adding a new operator in Xebra

Operator Setup

File Commands Help

Operator Code: Name:

Email:

Password: Sales Rep:

Starting Node:

Operator Type

Order entry Accounting

Choose for new

Security Options

- Disable special commission update
- Block from base system reports
- Block from CS Inventory
- Block from utilities
- Disable operator preferences
- Block from cheque book
- Disable Ledger menu in accounting
- Disable GL last month closed
- Block from accounting reports
- Restrict Control Files
- Block From E-commerce
- Block ODBC
- Block line item after Vendor Invoice received
- Block vendor information
- Disable all database updates
- Block CSI only confirm release option
- Block collections
- Block collections history edit/delete
- Block Invoicing
- Lock Notes

Operator Preferences

- Job Delete Ok
- Prevent update after invoice
- Receive vendor invoice after customer invoice
- Prevent update after in inventory
- No specs on exact repeat PO.
- Specs on quote
- Specs on acknowledgement
- Suppress Update Item Specifications message
- Receive XML Messages
- Suppress Minimum Stock Alert Messages
- Prevent order date update
- Allow editing of document configurations

Adding a new operator in Xebra

